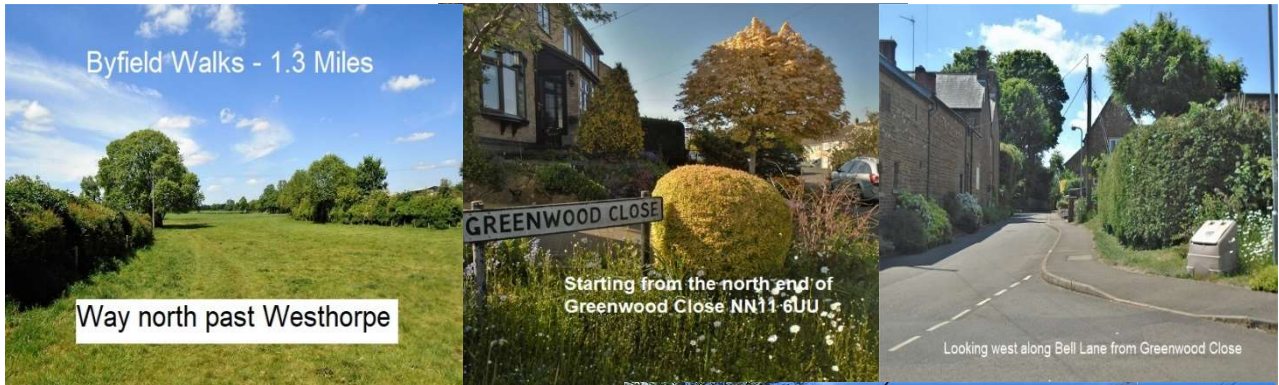


Byfield Walks from Greenwood Close – “way north of Westhorpe”...







Looking east along Boddington Road into Byfield



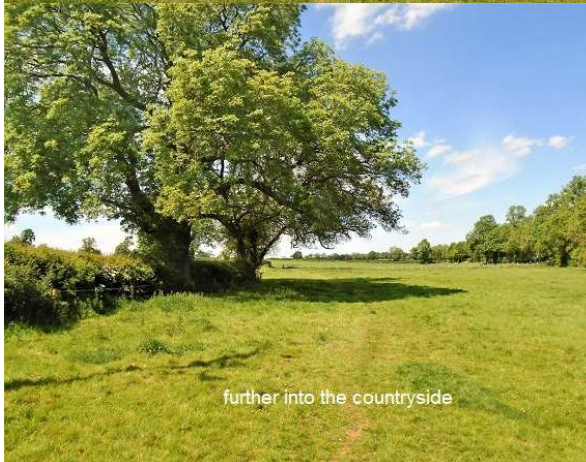
Looking north from the north end of Westhorpe Lane



Walking north from Westhorpe Lane



Looking back south towards Westhorpe Lane



further into the countryside



our other windmill



don't forget to close the gate



Looking south towards Byfield





across the crops



1st hurdle, through to the Priors Marston Road



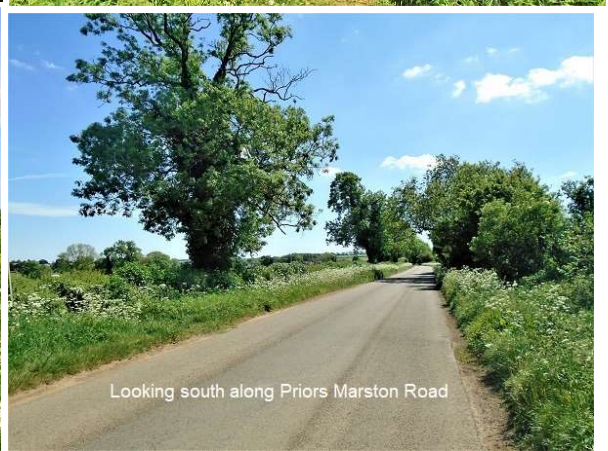
Charwelton chimneys tower to the north



1st hurdle hurdled



Looking north along Priors Marston Road



Looking south along Priors Marston Road



Priors Marston Road and The Twistle crossroads from Priors Marston Road



Looking east along Boddington Road towards Byfield village centre





Welcome break



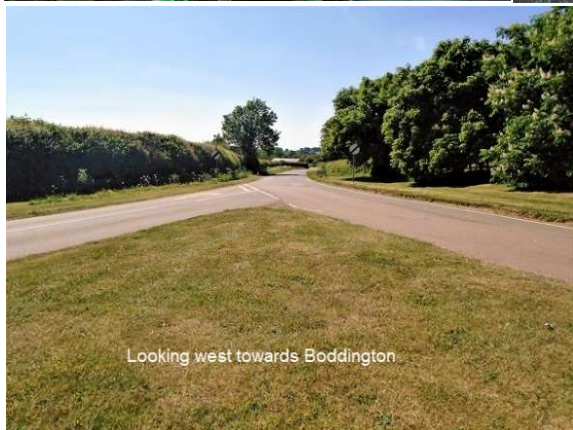
Looking out from Welcome Break



We've got company



Company - closer



Looking west towards Boddington



Looking north towards Priors Marston



Looking south along The Twistle



along The Twistle





The Twistle, looking south



The Twistle / Bell Lane junction, looking east



Thanks to Google Earth for the map.

**For the more adventurous**, there's an excellent extension to this walk, across the fields to Upper Boddington...

At the point where you exit onto Priors Marston Road, head north towards Iron Cross for about 250m then dive through the left hand (west side) hedge, when you see the "Footpath" signpost. Then you have about a quarter of a mile's walk due west, before turning northwest. Now walk for another three quarters of a mile to the spinney on the other side of the feeder channel from Boddington Reservoir to the Oxford Canal. Carry-on through the spinney, now heading just north of west for another half a mile towards Field's Farm. Here you have choice. Head south to Upper Boddington and back to Byfield, or Northwest to Priors Hardwick and beyond; all this will be across cultivated farmland. Assuming you turn south for home, you've another three quarters of a mile across farmland before coming-out onto the Boddington/Priors Hardwick lane at Highland's Farm. You are now 400m from The Plough, where if you time it right, excellent refreshment will be available! Then it's only a two-mile hike along the road back to Byfield. **Use O/S "Explorer" Map 206.**