

Byfield Walks – “Around Boddington Reservoir” ...



Byfield Walks - 1.7 miles

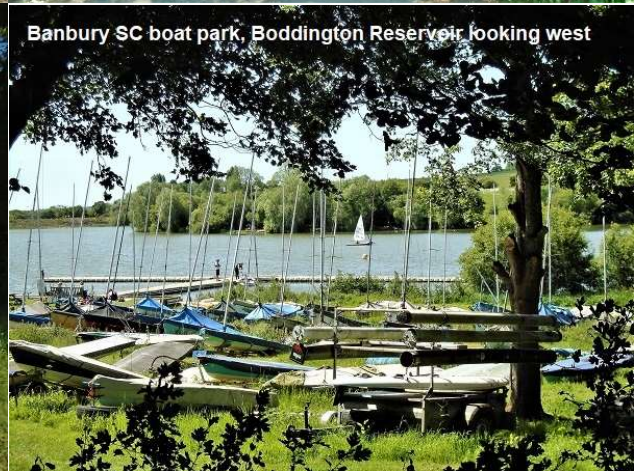
Around Boddington Reservoir



Boddington Reservoir track - east side looking south



Boddington Reservoir track - east side looking north



Banbury SC boat park, Boddington Reservoir looking west



Banbury Sailing Club - clubhouse

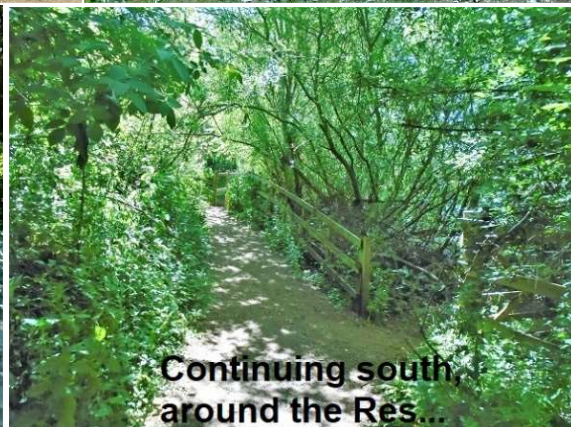


Footpath to Byfield

Boddington Reservoir track heading south



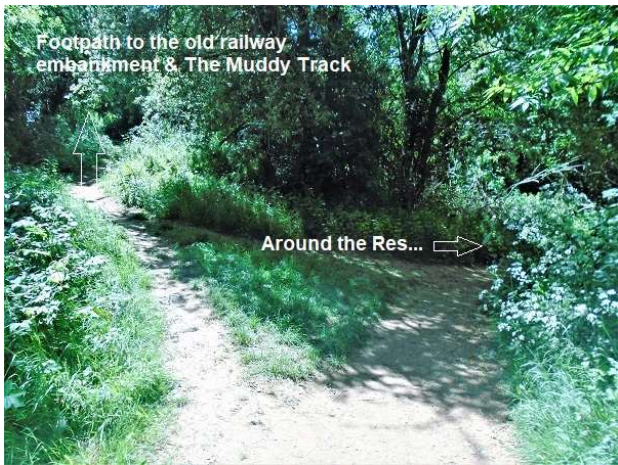
Footpath to Byfield



Continuing south,
around the Res...

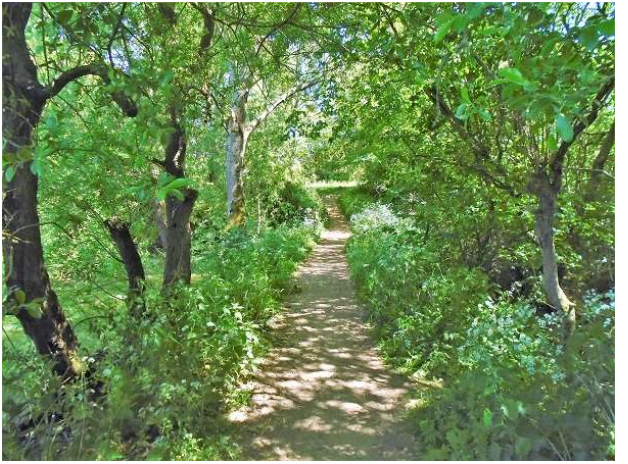


The Pool



Footpath to the old railway embankment & The Muddy Track

Around the Res... →



Don't wander off the path - very boggy here



Res ←

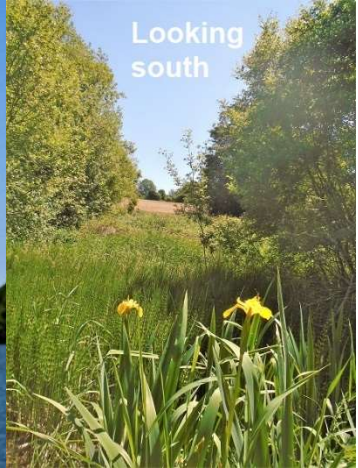
→ Bog



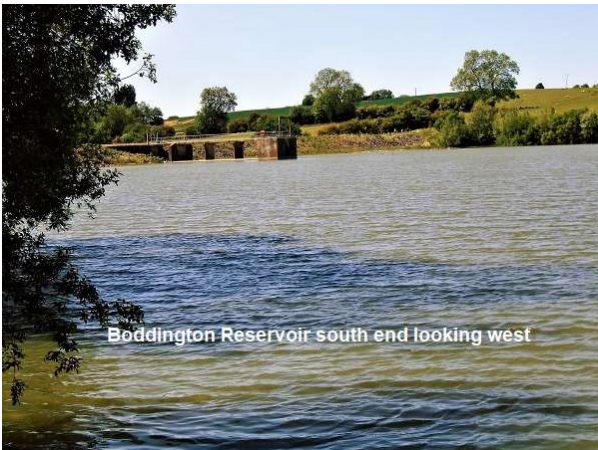
Boddington Reservoir looking north



"Our" windmill



Looking south



Boddington Reservoir south end looking west



Boddington Reservoir south dam - NB: the reservoir is used to top-up the canals, not for drinking water



Charwelton BT comms tower



Stream, feeding Boddington Res



Looking east along the south dam



Boddington Res West side upper path



Looking across to Banbury SC





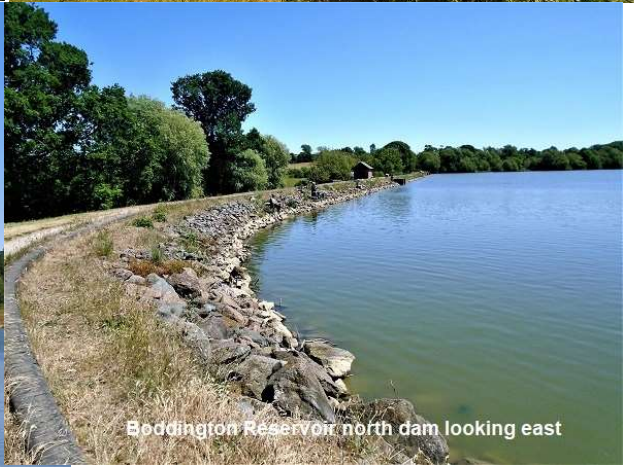
Boddington Reservoir west dam looking north



Looking backalong south



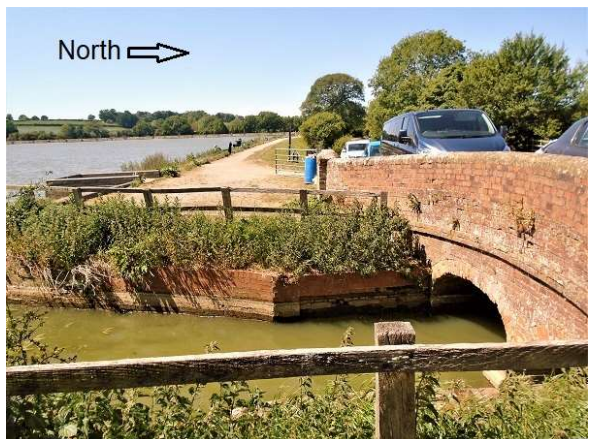
"Our" other windmill



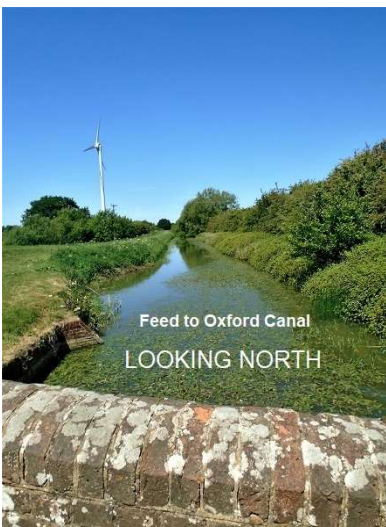
Boddington Reservoir north dam looking east



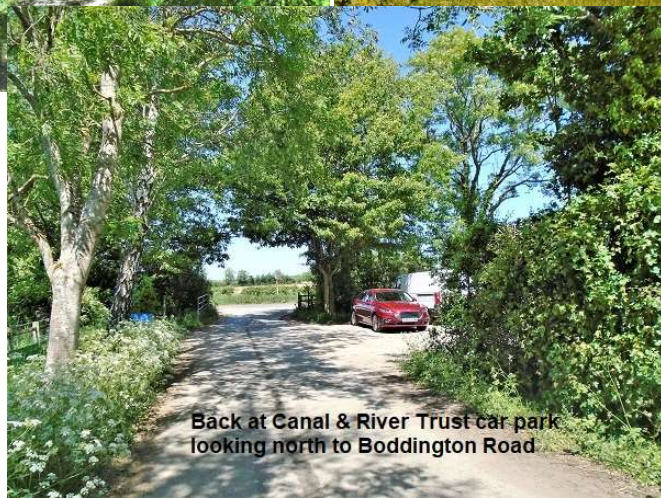
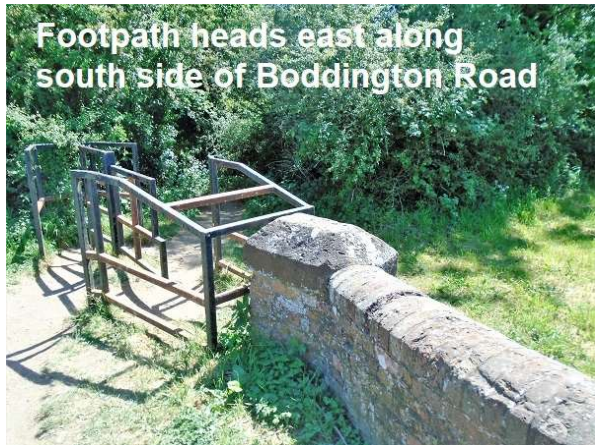
Looking west along north dam



North →



Feed to Oxford Canal
LOOKING NORTH



Thanks to Google Earth for the map.