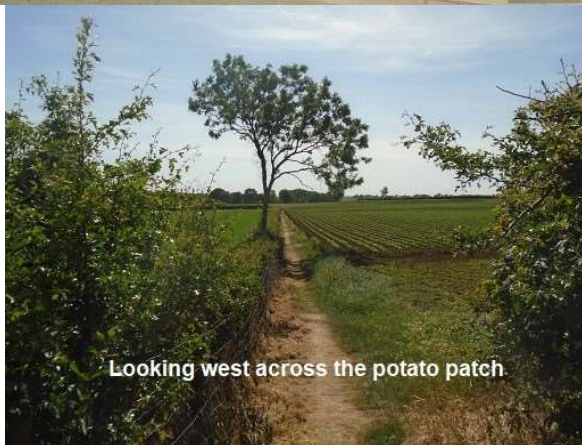
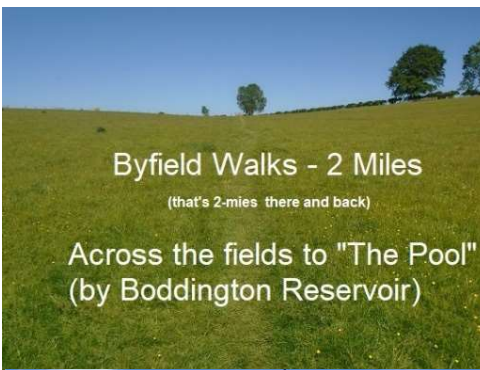


Byfield Walks – “Across the fields to The Pool & back”...





Diagonal to the NW



Looking south east back towards Byfield



Second kiss-gate



Through the gate...



across the fallow field



Third gate - notice says "Sheep & lambs, please keep dogs on lead"



Field west of third gate



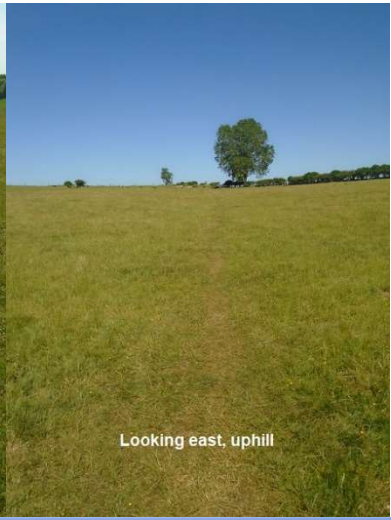
The "Pool" is somewhere behind those trees



Ancient and modern - windmills and mangers



Looking west - downdale



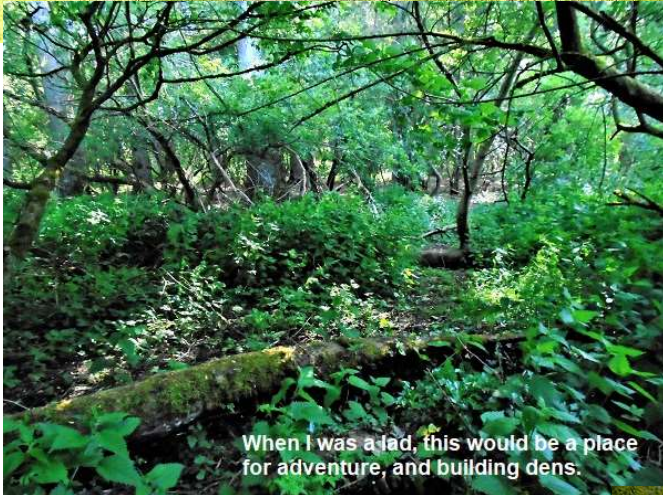
Looking east, uphill



"To the woods"



Looking back east again



When I was a lad, this would be a place for adventure, and building dens.



The bridge in the woods



and out the other side.



The "Pool" is just around the next corner, no kidding



That bridge is backalong, at the end of this path



The end is in sight



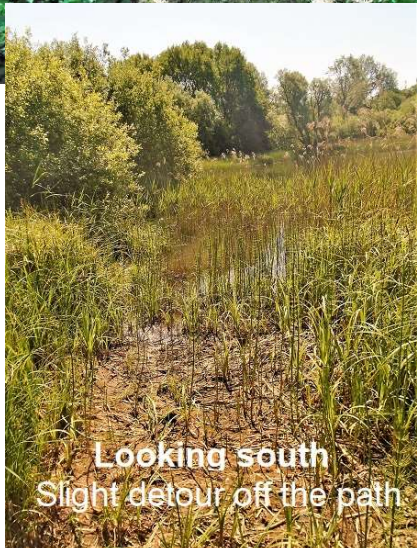
With boots on, you can walk all around The Pool (on a nice day)



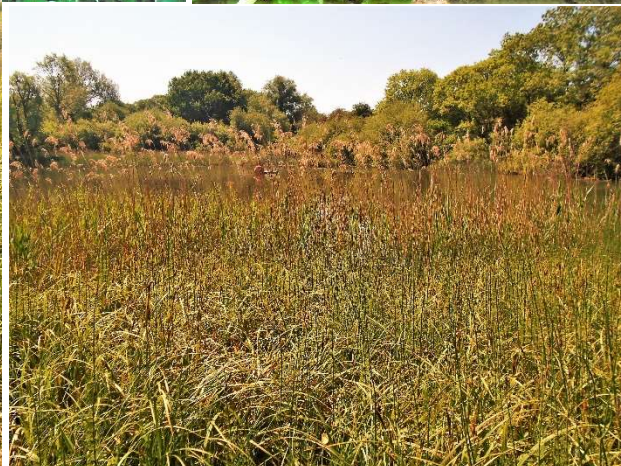
Taking the left hand path



Pool north side path



Looking south
Slight detour off the path







Thanks to Google Earth for the map.