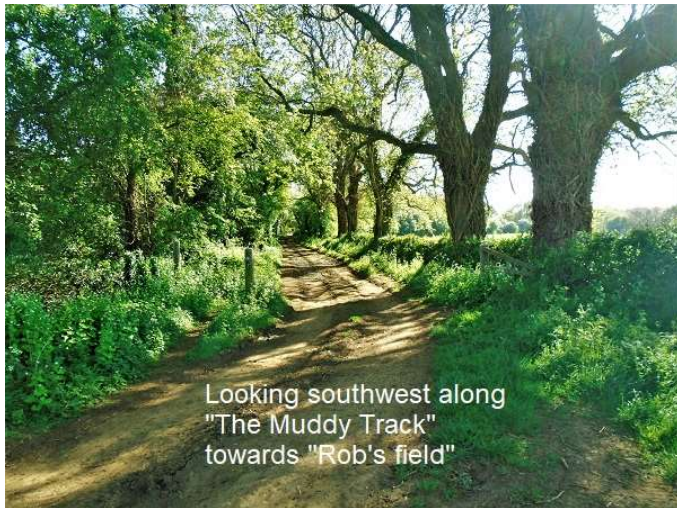
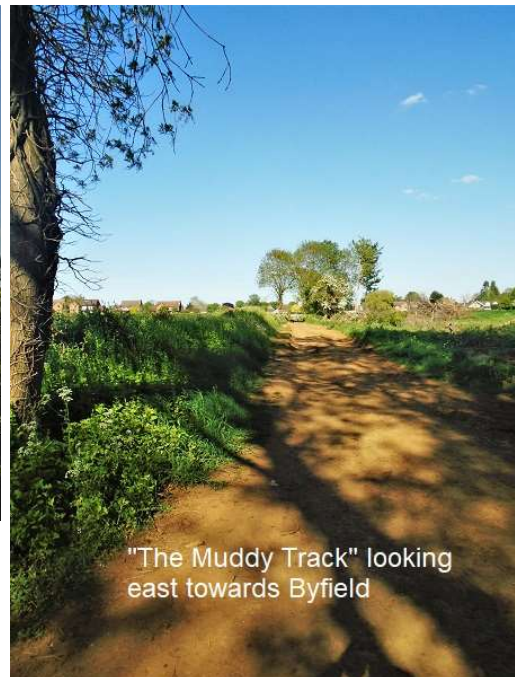
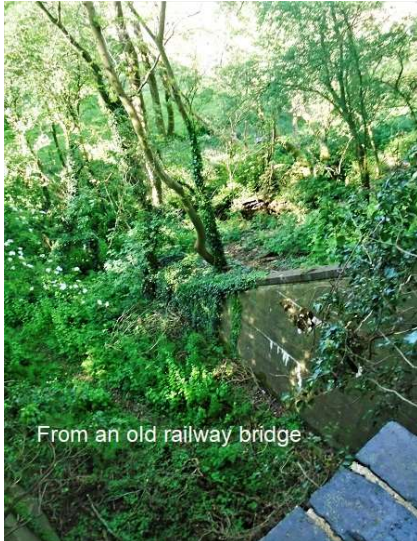


Byfield Walks – “The Muddy Track”...



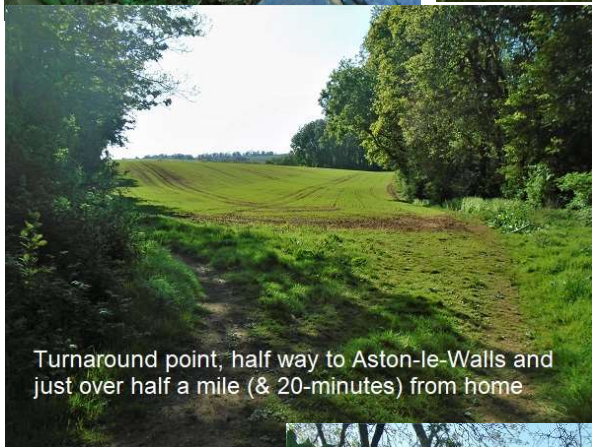




From an old railway bridge



The other railway bridge parapet (south side)



Turnaround point, half way to Aston-le-Walls and just over half a mile (& 20-minutes) from home



Other side of the old railway, at today's turnaround point - looking southeast



From the old railway embankment, looking north



Thanks to Google Earth for the map.